

# Fire Stop Slab MP556

## Technical Data Sheet

**Designed to provide fire compartmentation within concealed voids within the external fabric of a masonry wall construction.**

### PRODUCT

Fire Stop Slab MP556 is a reinforced foil faced stone mineral wool slab complete with a rebated edge which is intended for installation within a masonry wall application.

FEATURE	BENEFIT
Suitable for cavities up to 400mm wide	Wider cavities gives greater design scope
Tested to EN1366-4 for up to 60 minutes fire Integrity	Helps ensure that openings in cavity walls do not encourage the spread of fire into or out of the cavity. Suitable for vertical and horizontal applications.
Foil facing	The facing provides an effective smoke barrier
Cut to size on site or bespoke cutting available	Flexibility to suit site needs
Rebated edge	Assists installation and ensures airtightness

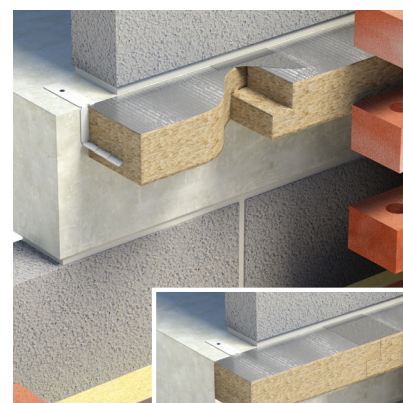


### TECHNICAL PROPERTIES

Dimension of finished product	1160 long x 900 wide x 75mm thick
DPC	When installing Fire Stop Slab MP556 it may be necessary to consider additional use of DPC's and/or cavity trays in line with relevant Building Control guidance
Facing	When installing Fire Stop Slab MP556 it may be necessary to consider additional use of DPC's and/or cavity trays in line with relevant Building Control guidance
Width of cavity (for barriers)	50 to 400mm wide cavities
Compression	5mm
Thermal Conductivity (W/mK)	0.034 W/mK
Management Systems	Certified as meeting the requirements of ISO 9001, ISO 14001, ISO 45001
NBS	Our products can be found on NBS Source



Fire Stop Slab MP556 installed vertically within a masonry wall.



Fire Stop Slab MP556 installed at the edge of a concrete floor slab.

## FIRE RESISTANCE

Fire Stop Slab MP556 has been independently tested in accordance with BS EN 1366-4:2021 and classified in accordance with BS EN 13501-2:2023.

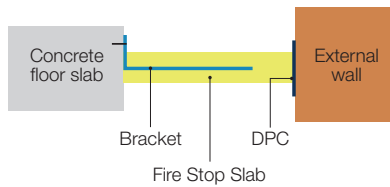
Integrity (E)	Insulation (I)	Insulation (I)
Vertical & Horizontal	Vertical	Horizontal
60 minutes	20 minutes	30 minutes

## INSTALLATION

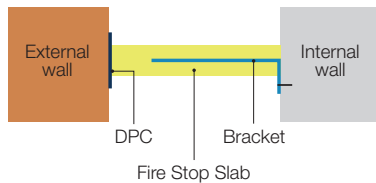
When installing Fire Stop Slab MP556 it is necessary to ensure the barrier is installed with 3 fixing brackets for horizontal and 2 fixing brackets for vertical orientations, per each individual length. Both L shaped and Z shaped brackets are suitable.

The lap joint of the barrier is sealed with an aluminium foil tape.

### Horizontal orientation - Side View



### Vertical orientation - Plan View



## STORAGE

Keep dry during storage and delivery. Products should be stored away from the elements until ready for installation.