

Acoustic Party Wall DPC MP557

Technical Data Sheet

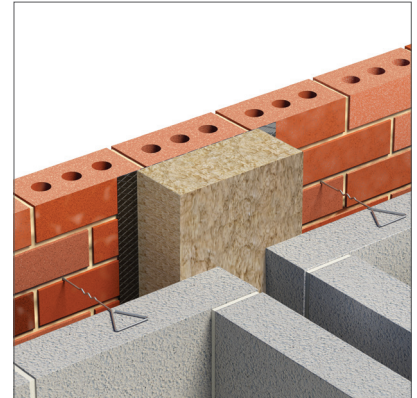


Designed to prevent the passage of fire within external masonry wall locations and to assist in reducing flanking sound transmission at party wall/external masonry wall junctions.

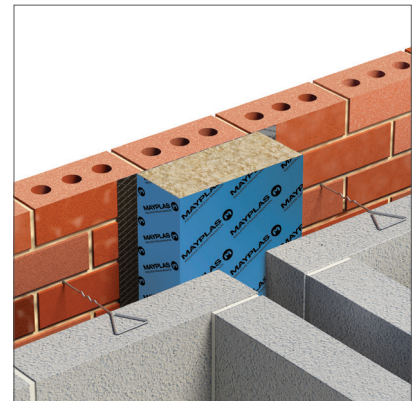
PRODUCT

An unfaced or polyethene enclosed stone mineral wool slab bonded to a polythene DPC intended for vertical applications.

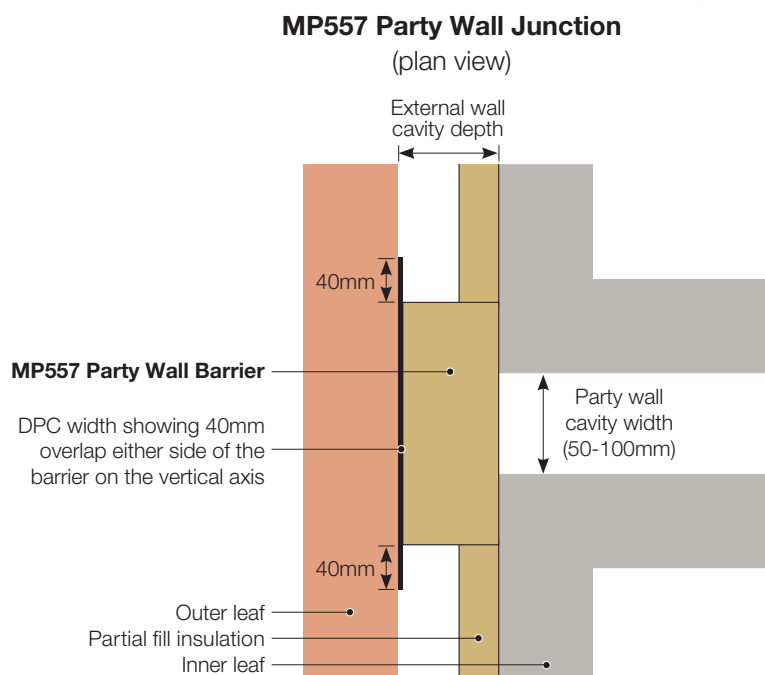
FEATURES	BENEFITS
Suitable for external cavities up to 195mm wide	Wider cavities give a greater design scope
Assessed to BS 476-20:1987 & BS 476-22:1987 for up to 120 mins fire integrity	Suitable for vertical applications, MP557 prevents the spread of fire and smoke in all three directions at a party wall junction
Closed state barrier	Assists in reducing flanking sound transmission between properties
Choice of finishes: unfaced or polythene enclosed	The polyethene enclosure prevents water ingress into the mineral wool during installation
Integral DPC	Prevents moisture transmission across the cavity



Unfaced Party Wall DPC at junction of party wall and external cavity



Polyethene enclosed Party Wall DPC at junction of party wall and external cavity



TECHNICAL PROPERTIES

DPC	<p>The DPC is minimum 380mm wide and 1300mm long allowing a 100mm overlap at the bottom of each barrier, based on a 300mm wide barrier. This allows a 40mm DPC overlap either side of the insulation.</p> <p>The 100mm overlap ensures that any moisture remains on the face of the integral DPC preventing moisture ingress into barrier itself.</p> <p>The DPC conforms to BS 6515.</p>
Facing	<p>Either unfaced or polyethylene enclosed.</p> <p>The polyethene assists in preventing moisture ingress into the stone mineral wool barrier during installation.</p>
Party Wall Cavity Size	<p>Maximum party wall cavity width is 80mm.</p> <p>For larger party wall cavity widths please contact our sales office.</p>
Width of cavity (for barriers)	From 50 to 200mm wide external cavities
Compression	5mm or 10mm
Fire Resistance	Fire Stop Slab MP557 has been independently assessed in accordance with BS 476-20:1987 & BS 476-22:1987
Thermal Conductivity	0.035 W/mK
Thermal Resistance	50m 1.40 m ² K/W
	100mm 2.85 m ² K/W
	150mm 4.25 m ² K/W
Management Systems	Certified as meeting the requirements of ISO 9001, ISO 14001, ISO 45001
NBS	Our products can be found on NBS Source

INSTALLATION

The integral DPC must be installed with the DPC located to the rear of the outer masonry layer. The 100mm DPC at the bottom of each barrier should be overlapped with the lower barrier to prevent moisture ingression.

STORAGE

Keep dry during storage and delivery.

Products should be stored away from the elements until ready for installation.

COMPRESSION TABLES

5mm compression

		Barrier Dimensions		BS 476-20/22:1987 Fire Resistance (mins)	
OPTION 1	External Wall Cavity Depth (mm)	Insulation (mm)	DPC Width (mm)	Integrity (E)	Insulation (I)
50-80mm Party Wall Cavity Width	50	55 x 300 x 1200	380	120	30
	75	80 x 300 x 1200		120	30
	100	105 x 300 x 1200		120	30
	120	125 x 300 x 1200		120	30
	125	130 x 380 x 1200	460	60	30
	150	155 x 380 x 1200		60	30
	200	205 x 380 x 1200		60	30
OPTION 2	External Wall Cavity Depth (mm)	Insulation (mm)	DPC Width (mm)	Integrity (E)	Insulation (I)
100mm Party Wall Cavity Width	50	55 x 320 x 1200	400	120	30
	75	80 x 320 x 1200		120	30
	100	105 x 320 x 1200		120	30
	120	125 x 320 x 1200		120	30
	125	130 x 400 x 1200	480	60	30
	150	155 x 400 x 1200		60	30
	200	205 x 400 x 1200		60	30

10mm compression

		Barrier Dimensions		BS 476-20/22:1987 Fire Resistance (mins)	
OPTION 1	External Wall Cavity Depth (mm)	Insulation (mm)	DPC Width (mm)	Integrity (E)	Insulation (I)
50-80mm Party Wall Cavity Width	50	60 x 220 x 1200	300	90	30
	65	75 x 220 x 1200		90	30
	75	85 x 330 x 1200	410	90	90
	100	110 x 330 x 1200		90	90
	125	135 x 330 x 1200		90	90
	150	160 x 330 x 1200		90	90
	175	185 x 330 x 1200		90	90
OPTION 2	External Wall Cavity Depth (mm)	Insulation (mm)	DPC Width (mm)	Integrity (E)	Insulation (I)
100mm Party Wall Cavity Width	50	60 x 240 x 1200	320	90	30
	65	75 x 240 x 1200		90	30
	75	85 x 350 x 1200	430	90	90
	100	110 x 350 x 1200		90	90
	125	135 x 350 x 1200		90	90
	150	160 x 350 x 1200		90	90
	175	185 x 350 x 1200		90	90