

Technical Data Sheet



The Mayplas Party Wall Head System is intended to provide fire protection compartmentation at the party wall junction above a twin spandrel panel for both masonry and timber frame applications

The Party Wall Head System comprises of 2 components:

- 1: The Party Wall Head Cap which is fitted over the entire width of the spandrel panels but under the breather membrane.
- 2: The Tile Batten Barrier which is fitted over the Party Wall Head Cap, into which the counter battens are fitted.

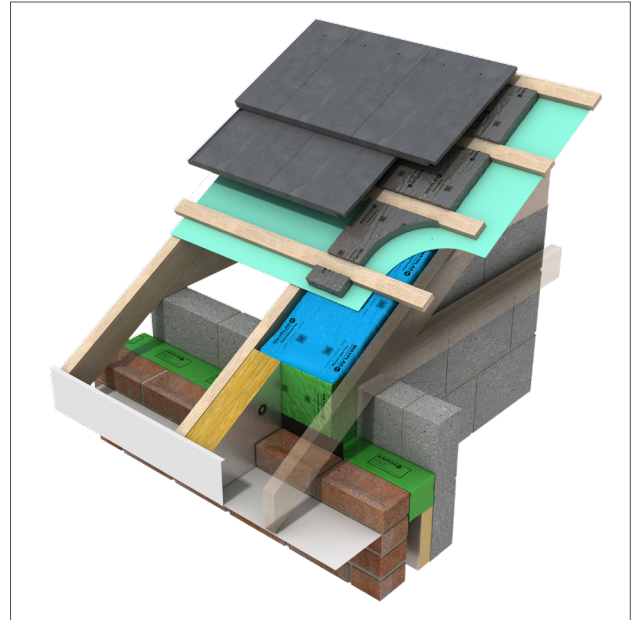
To ensure the reported and tested fire resistance performance both components must be installed as per Mayplas' instruction.

PRODUCT

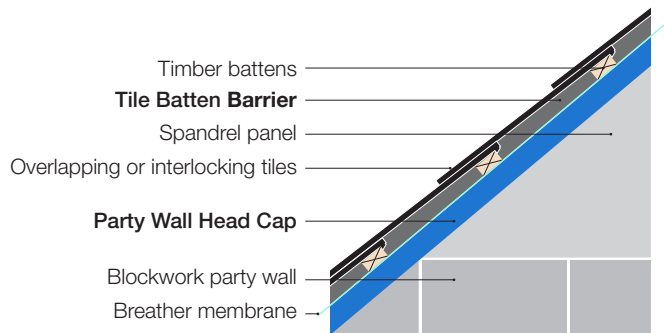
Mayplas Party Head Wall system is designed to address the Building Regulations requirement to maintain the continuity of fire resistance between a compartment party wall and the underside of the roof covering or deck.

The Party Wall Head Cap and the Tile Batten Barrier both consist of stone mineral wool of differing thicknesses enclosed in a coloured polythene.

FEATURE	BENEFIT
Suitable for party wall cavities up to 200mm wide	Wider cavities give greater design scope
Assessed to BS 476-20:1987 & BS 476-22:1987 achieves 60 minutes fire integrity and 60 minutes insulation	Achieves the desired fire performance for compartmentation
Closed state barrier	The Party Wall Head System prevents the spread of fire and smoke across a party wall junction
Stone mineral wool core	Assists in reducing flanking sound transmission between properties
Components sleeved in differently coloured polythene	Easy identification so that the right product is correctly placed
Cut to size on site	Flexibility to fit installation variations
Suitable for sloping roofs up to 40°	Can be used for most roof designs



Party Wall Head System in-situ - construction by others



Cross section of roof including Party Wall Head System

PARTY WALL HEAD CAP

Finished product dimensions

Party Wall Cavity	Length	Thickness	Width when used with 75mm timber frame spandrels	Width when used with 100mm for masonry spandrel blocks
50mm	1200mm	40, 50 or 60mm	200mm	250mm
75mm	1200mm	40, 50 or 60mm	225mm	275mm
100mm	1200mm	40, 50 or 60mm	250mm	300mm
Other sizes	1200mm	40, 50 or 60mm	Upon request	Upon request

Polythene Colour	Flanged blue polythene to enable fixing by staples onto the rafters.
Width of party wall cavity	A party wall cavity width is typically 100mm. For larger party wall cavity widths please contact our sales office. Timber frame spandrels must be a minimum of 75mm in width either side of the party wall cavity.
Compression	Minimum 10mm

TILE BATTEN BARRIER

NHBC 7.2.16 states that a separating wall should stop 25mm below the top of the adjacent roof trusses. Mayplas Party Wall Head Cap is designed to compress within this gap, satisfying the NHBC recommendation for a mineral wool fire barrier.

Finished product dimensions

Thickness	Lengths	Widths available
30mm	1200mm	200, 225, 250, 275, 300mm
40mm	1200mm	200, 225, 250, 275, 300mm
Thicknesses up to 80mm (can be used either as a single layer or 2 layers to desired thickness) based on the 2 thicknesses above	1200mm	200, 225, 250, 275, 300mm

Polythene Colour	Grey
Compression	Minimum 5-10mm. The product must be compressed to ensure a complete fit with the underside of the roof tiles.

SYSTEM DETAILS

Fire Resistance. Integrity (E) Insulation (I)	Party Wall Head System has been independently assessed in accordance with BS 476-20:1987 & BS 476-22:1987 achieving 60 minutes fire integrity and 60 minutes insulation
Assessment Report Number	Kiwa Fire Safety Compliance report PAR/25302/01
Thermal Conductivity (W/mK)	Stone Mineral Wool 0.035
Thermal Resistance (m ² K/W)	Dependant upon the overall product thickness. Please ask our technical team for this information.

Management Systems

Certified as meeting the requirements of ISO 9001, ISO 14001, ISO 45001

NBS

Our products can be found on NBS Source.

Storage

Keep dry during storage and delivery. Products should be stored away from the elements until ready for installation.

Installation

See separate Installation Guidelines

Operation

The product is intended to be static post installation. There is no operator involvement in its use

Maintenance

The products intended use and design, along with its often-inaccessible location post construction, means there are no maintenance requirements