

Technical Data Sheet



Mayplas Thermafire A2 Soffit provides thermal and acoustic insulation within the soffit at the party wall junction.

An A2-s1,d0 limited combustibility slab, foil faced on both sides, is available in various densities and thicknesses, facilitating thermal resistance values (Approved Document L) and providing resistance to the passage of sound synonymous with stone mineral wool insulation (Approved Document E).

FEATURE	BENEFIT
Reaction to Fire A2-s1,d0 according to BS EN 13501-1	Deemed 'limited combustibility', can be used in all construction locations
Range of thicknesses (100 and 150mm)	Permits design of thermal performance to suit the construction
Foil Facings	Provides an effective vapour barrier and prevents fibre migration
Standard 600 x 600 slabs can be cut to size on site	Flexibility to suit site needs

PHYSICAL PROPERTIES

Dimension of finished product	Length	Width	Thickness
	600mm	600mm	100mm
	600mm	600mm	150mm
Facing	Foil-faced both sides		
Thermal Conductivity (W/mK)	0.035		

FIXINGS

Mayplas can supply fixings for Thermafire A2 Soffit. These consist of the fixing suitable for both masonry and timber frame applications and a 50mm outside diameter washer (sold separately).

Fixing length should allow for a minimum 35mm substrate embedment.

Insulation thickness	Minimum Length of fixing	Minimum Diameter of fixing
100mm	140mm	6.3mm
150mm	200mm	6.3mm

Management Systems

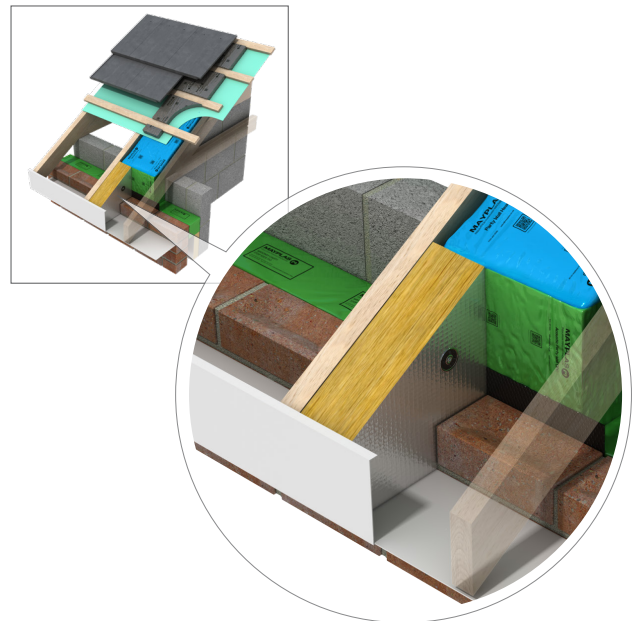
Certified as meeting the requirements of ISO 9001, ISO 14001, ISO 45001

NBS

Our products can be found on NBS Source.

Storage

Keep dry during storage and delivery. Products should be stored away from the elements until ready for installation.



Thermafire A2 Soffit fitted to a construction by others

INSTALLATION

- Thermafire A2 Soffit is designed to be cut on site to ensure an accurate cut to fill the full soffit void at the party wall, as per the illustration.
- Start by measuring the dimensions area to be filled.
- Add a tolerance of at least 5mm to all cut dimensions to create a tight fit.
- Cut with a suitable insulation knife including the extra tolerance.
- Fit the cut slab into place adjusting position to create the tightest fit.
- A minimum overlap of 75mm needs to be achieved between the thickness of the Thermafire A2 Soffit and the Party Wall Head Barrier interface to compartmentalise the soffit.
- Secure through the product to the timber truss or masonry block using the correct length of fixing for the width of product. These can be fixed manually or driven home using a hammer drill.

NOTE:

The product must fully fill the soffit with no gaps remaining.

Field of Application.

Valid for any wooden-based substrate with at least density of 337.5 kg/m³. Valid free standing without substrate

Operation

The product is intended to be static post installation. There is no operator involvement in its use.

Maintenance

The products intended use and design, along with its often-inaccessible location post construction, means there are no maintenance requirements.