

Fire Stop Slab MP556

Technical Data Sheet



Designed to provide fire compartmentation within concealed voids within the external fabric of a masonry wall construction.

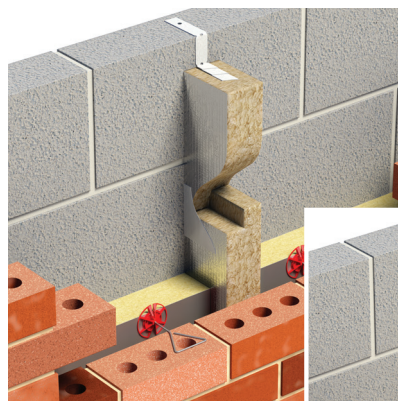
PRODUCT

Fire Stop Slab MP556 is a reinforced foil faced stone mineral wool slab complete with a rebated edge which is intended for installation within a masonry wall application.

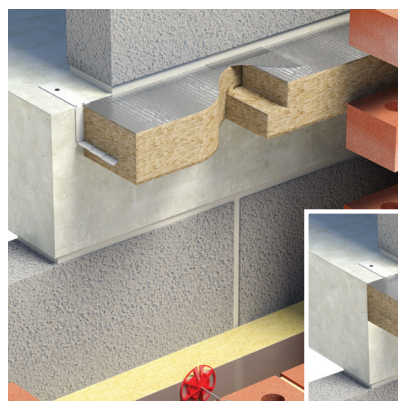
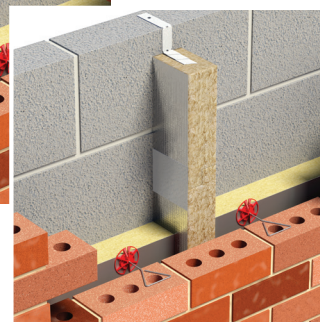
FEATURE	BENEFIT
Suitable for cavities up to 400mm wide	Wider cavities gives greater design scope
Tested to EN1366-4 for up to 120 minutes fire integrity	Helps ensure that openings in cavity walls do not encourage the spread of fire into or out of the cavity. Suitable for vertical and horizontal applications.
Foil facing	The facing provides an effective smoke barrier
Cut to size on site or bespoke cutting available	Flexibility to suit site needs
Rebated edge	Assists installation and ensures airtightness

TECHNICAL PROPERTIES

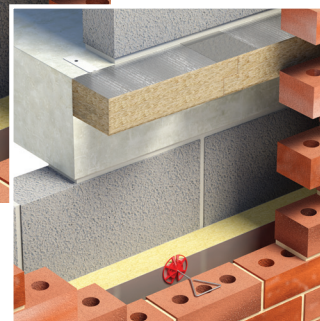
Dimension of finished product	Cut at 1200mm x 600mm overall the product is rebated on both sides of its length - see later schematic
DPC	When installing Fire Stop Slab MP556 it may be necessary to consider additional use of DPC's and/or cavity trays in line with relevant Building Control guidance
Facing	Foil faced both sides
External Cavity Width	10 to 400mm
Minimum Compression	5mm
Thermal Conductivity (W/mK)	0.034 W/mK
Management Systems	Certified as meeting the requirements of ISO 9001, ISO 14001, ISO 45001
NBS	Our products can be found on NBS Source



Fire Stop Slab MP556 installed vertically within a masonry wall by others.



Fire Stop Slab MP556 installed at the edge of a concrete floor slab in masonry by others.



FIRE RESISTANCE

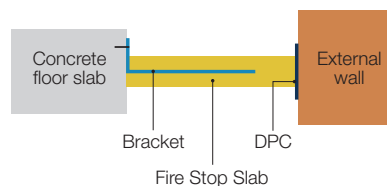
Fire Stop Slab MP556 has been independently tested in accordance with BS EN 1366-4:2021 and classified in accordance with BS EN 13501-2: 2023 Report No WF 543213 Issue 2.

Thickness (mm)	Integrity (E) (minutes)	Insulation (I) (minutes)		Maximum External Cavity Width (mm)
75	60	20	30	400
100	120	45	60	300
	Vertical & Horizontal	Vertical	Horizontal	

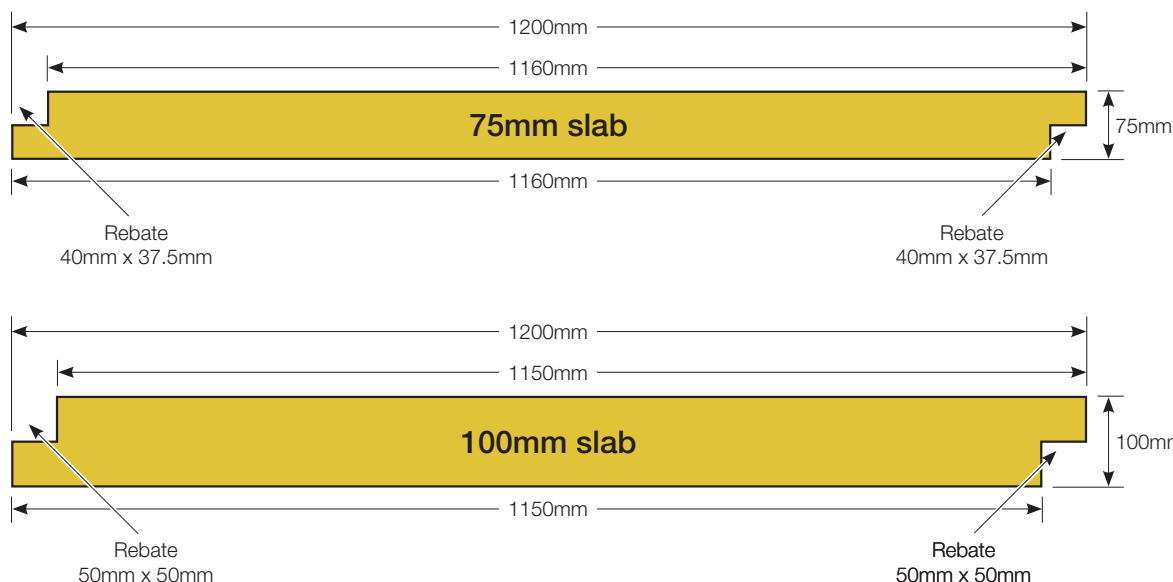
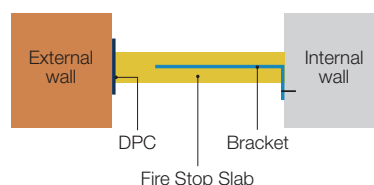
INSTALLATION

- When installing MP556 Fire Stop Slab it is necessary to ensure the slab is installed with 3 fixing brackets for both horizontal and vertical orientations when using a 1200mm long slab.
- Brackets should be made from minimum 1mm thick steel 300mm long and 25mm wide each should be attached using 1 No. 3.5mm diameter 25mm long zinc coated steel screw.
- Each bracket should be bent into either an L shape or Z shape to suit the installation.
- Brackets should not be fitted closer than 100mm from the edge of a corner.
- Brackets should be inserted mid-depth in the barrier (see table for centres and penetration).
- The lap joint of the barrier can be sealed with an aluminium foil tape.

Horizontal orientation - Side View



Vertical orientation - Plan View



MP556 Thickness	Bracket fixing pattern
75mm Horizontal	Maximum 500mm* centres. Insert bracket to 90% of cavity width.
75mm Vertical	Maximum 400mm* centres. Insert bracket to 75% of cavity width.
100mm Horizontal or Vertical	Maximum 450mm* centres. Insert bracket to 80% of cavity width.

* See specific classification report for greater fixing centre detail.

ACCESSORIES

Product Code: 1400246
MP556 Fixing Brackets (Boxed in 50s)

STORAGE

Keep dry during storage and delivery. Products should be stored away from the elements until ready for installation.