

MP552 Masonry Cavity Barrier and Masonry Party Wall Barrier

Technical Data Sheet



Designed to provide fire compartmentation within concealed voids within the external fabric of a masonry wall construction.

PRODUCT

MP552 Masonry Cavity Barrier & MP552 Masonry Party Wall Barrier are polythene enclosed stone mineral wool cavity barriers manufactured in sizes to suit specified cavity widths.

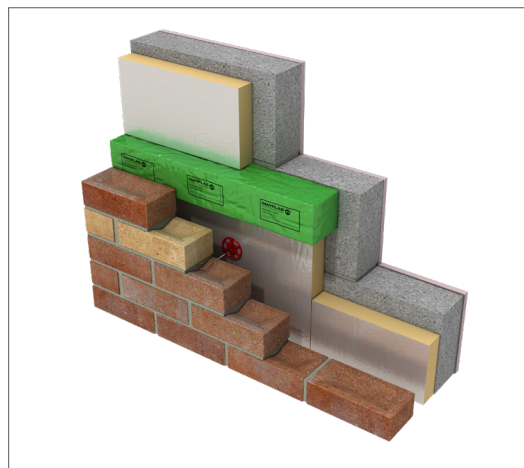
MP552 Masonry Cavity Barriers assist in satisfying requirements of guidance documents such as Approved Document B and The Scottish Technical Handbooks.

MP552 Masonry Cavity Barriers are suitable for both vertical and horizontal positioning to the edge of cavities such as around openings, at compartment lines and to sub-divide cavities.

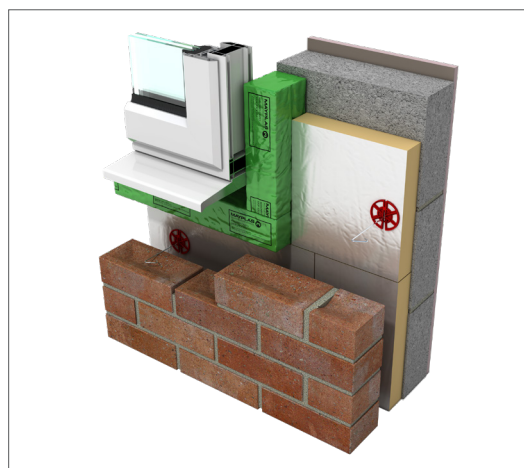
MP552 Masonry Party Wall Barriers is suitable for use at party wall lines.

MP552 is placed at designated positions during erection of masonry which then compresses the barrier between the inner and outer leaf within the cavity creating a seal against smoke and heat transmission.

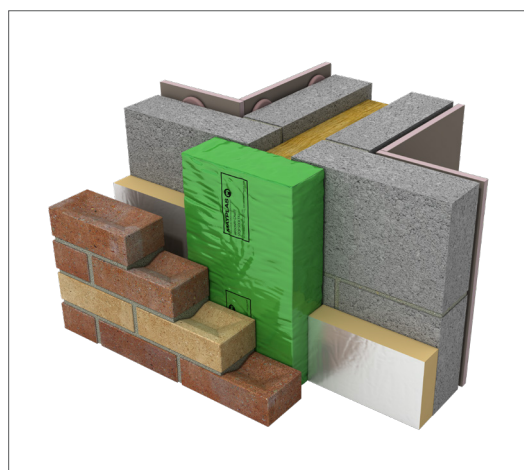
FEATURE	BENEFIT
Can be used for cavities from 35-235mm	Wide range of cavities gives design scope
Tested to BS EN1366-4:2021 for up to 60 minutes fire integrity (E)	Achieves the desired fire performance for compartmentation
Tested at both mid-cavity and flush to apertures, as per the requirement of BS EN1366-4:2021	Suitable for vertical and horizontal applications for mid-cavity and around apertures such as doors and windows
Suitable for party wall cavities from 50-100mm	MP552 Party Wall Barrier sizes permit flexibility in design
Closed state barrier	Assists in reducing flanking sound transmission between properties



MP552 Masonry Cavity Barrier - mid-cavity
(construction by others)



MP552 Masonry Cavity Barrier - around aperture
(construction by others)



MP552 Masonry Party Wall Barrier - installed vertically
(construction by others)

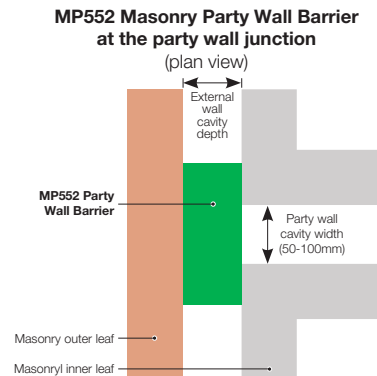
MP552 CAVITY BARRIER

DPC	When installing Mayplas MP552 Masonry Cavity Barriers it may be necessary to consider additional use of DPC's and/or cavity trays in line with relevant Building Control guidance
Width of cavity	35 to 235mm cavities
Compression	15mm
Thermal Conductivity (W/mK)	0.037
Fire Resistance Integrity (E) Insulation (I)	MP552 Masonry Cavity Barriers have been independently tested in accordance with BS EN 1366-4:2021 and subsequently assessed as a Field of Application.
Field of application report number	WF 547246

Max Cavity Width (up to)	Product Orientation	Fire Resistance mid cavity (mins)		Fire Resistance apertures (mins)		Product Dimensions (mm)
		Integrity (E)	Insulation (I)	Integrity (E)	Insulation (I)	
35 mm	Horizontal or Vertical	60	45	30	30	50x65x1200
40 mm						55x65x1200
45 mm						60x65x1200
50 mm						65x65x1200
55 mm						70x65x1200
60 mm	Horizontal or Vertical	60	60	30	30	75x90x1200
65 mm						80x90x1200
70 mm						85x90x1200
75 mm	Horizontal or Vertical	60	15	45	15	90x100x1200
80 mm						95x100x1200
85 mm						100x100x1200
90 mm						105x100x1200
95 mm						110x100x1200
100 mm						115x100x1200
105 mm						120x100x1200
110 mm						125x100x1200
115 mm	Horizontal or Vertical	45	20	45 Horizontal Only	15 Horizontal Only	130x100x1200
120 mm						135x130x1200
125 mm						140x130x1200
130 mm						145x130x1200
135 mm						150x130x1200
140 mm						155x130x1200
145 mm						160x130x1200
150 mm	Horizontal or Vertical	45	15	90 Horizontal Only	15 Horizontal Only	165x130x1200
155 mm						170x130x1200
160 mm						175x130x1200
165 mm						180x130x1200
170 mm						185x130x1200
175 mm						190x130x1200
180 mm						195x130x1200
185 mm						200x130x1200
190 mm						205x130x1200
195 mm						210x130x1200
200 mm						215x130x1200
205 mm						220x130x1200
210 mm						225x130x1200
215 mm						230x130x1200
220 mm						235x130x1200
225 mm						240x130x1200
230 mm						245x130x1200
235 mm						250x130x1200

MP552 MASONRY PARTY WALL BARRIER

DPC	When installing Mayplas MP552 Masonry Cavity Barriers it may be necessary to consider additional use of DPC's and/or cavity trays in line with relevant Building Control guidance. Alternatively consider the use of MP557 Acoustic Party Wall DPC which has a DPC pre-attached.
Width of cavity	35 to 150mm cavities
Compression	15mm
Thermal Conductivity (W/mK)	0.037
Fire Resistance Integrity (E) Insulation (I)	MP552 Masonry Cavity Barriers have been independently tested in accordance with BS EN 1366-4:2021 and subsequently assessed as a Field of Application
Field of application report number	WF 547246



Max External Cavity Width (up to)	Product Orientation	Fire Resistance (mins)		Product Dimensions (mm)		
		Integrity (E)	Insulation (I)	for 50mm PW Cavities	for 75mm PW Cavities	for 100mm PW Cavities
35 mm	Vertical	60	60	50x180x1200	50x210x1200	50x230x1200
40 mm				55x180x1200	55x210x1200	55x230x1200
45 mm				60x180x1200	60x210x1200	60x230x1200
50 mm				65x180x1200	65x210x1200	65x230x1200
55 mm				70x180x1200	70x210x1200	70x230x1200
60 mm	Vertical	90	90	75x230x1200	75x260x1200	75x280x1200
65 mm				80x230x1200	80x260x1200	80x280x1200
70 mm				85x230x1200	85x260x1200	85x280x1200
75 mm	Vertical	60	60	90x270x1200	90x300x1200	90x320x1200
80 mm				95x270x1200	95x300x1200	95x320x1200
85 mm				100x270x1200	100x300x1200	100x320x1200
90 mm				105x270x1200	105x300x1200	105x320x1200
95 mm				110x270x1200	110x300x1200	110x320x1200
100 mm				115x270x1200	115x300x1200	115x320x1200
105 mm	Vertical	90	90	120x350x1200	120x380x1200	120x400x1200
110 mm				125x350x1200	125x380x1200	125x400x1200
115 mm				130x350x1200	130x380x1200	130x400x1200
120 mm				135x350x1200	135x380x1200	135x400x1200
125 mm				140x350x1200	140x380x1200	140x400x1200
130 mm				145x350x1200	145x380x1200	145x400x1200
135 mm				150x350x1200	150x380x1200	150x400x1200
140 mm				155x350x1200	155x380x1200	155x400x1200
145 mm				160x350x1200	160x380x1200	160x400x1200
150 mm				165x350x1200	165x380x1200	165x400x1200

Management Systems

Certified as meeting the requirements of ISO 9001, ISO 14001, ISO 45001

NBS

Our products can be found on NBS Source.

Storage

Mayplas cavity barriers are supplied in polythene packs.

Keep dry during delivery and storage.

Products should be stored away from the elements until ready for installation.

Installation

See separate installation guidelines.

Operation

The product is intended to be static post installation. There is no operator involvement in its use

Maintenance

The products intended use and design, along with its often-inaccessible location post construction, means there are no maintenance requirements.