



MP551 Timber Frame Cavity Barrier

To be installed by the timber frame installer.
Tested at both mid-cavity and flush to apertures, as per the requirement of BS EN1366-4:2021 for up to 60 minutes fire integrity (E) and insulation (I).



Thermal Eaves Batt

To be installed by the timber frame installer.
Provides a thermal barrier at the interface between the ceiling loft space and the external wall for both masonry and timber.

COMING SOON



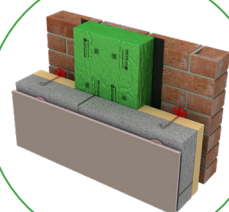
MP551 Timber Frame Party Wall Barrier

To be installed by the timber frame installer.
Tested to BS EN1366-4:2021 for a minimum of 60 minutes fire integrity (E) and insulation (I). Alternatively use MP552 Party Wall Cavity Barrier.



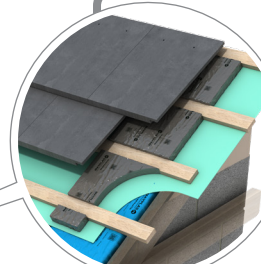
MP557 Party Wall Barrier DPC

To be installed by the bricklayer.
Use below DPC.
Tested to BS EN1366-4:2021 for a minimum of 60 minutes fire integrity (E) and insulation (I).



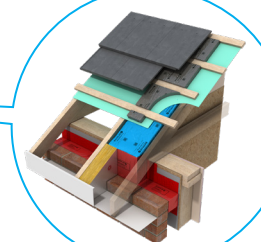
Tile Batten Barrier

To be installed by the timber frame installer or roofing contractor.
Used in conjunction with the Party Wall Head Cap to achieve 60 minutes fire integrity and 60 minutes insulation, assessed to BS 476-20:1987 & BS 476-22:1987



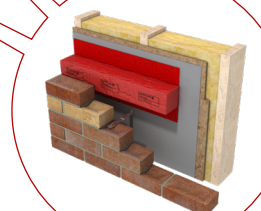
Party Wall Head Cap System

To be installed by the timber frame installer.
Used in conjunction with the Tile Batten Barrier to achieve 60 minutes fire integrity and 60 minutes insulation, assessed to BS 476-20:1987 & BS 476-22:1987



MP551 Timber Frame Cavity Barrier

To be installed by the timber frame installer.
Tested at both mid-cavity and flush to apertures, as per the requirement of BS EN1366-4:2021 for up to 60 minutes fire integrity (E) and insulation (I).



Thermafire A2 Soffit

To be installed by the timber frame installer.
Achieves Reaction to Fire A2-s1,d0 according to BS EN 13501-1

