



MP552 Masonry Cavity Barrier

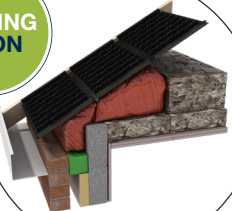
To be installed by the bricklayer.
Tested at both mid-cavity and flush to apertures, as per the requirement of BS EN1366-4:2021 for up to 60 minutes fire integrity (E) and insulation (I).



Thermal Eaves Batt

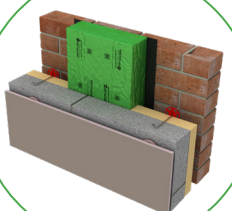
To be installed by the house builder or roofing contractor.
Provides a thermal barrier at the interface between the ceiling loft space and the external wall for both masonry and timber.

COMING SOON



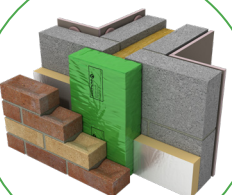
MP557 Party Wall

To be installed by the bricklayer.
Tested to BS EN1366-4:2021 for a minimum of 60 minutes fire integrity (E) and insulation (I).
Alternatively use MP552 Party Wall Cavity Barrier.



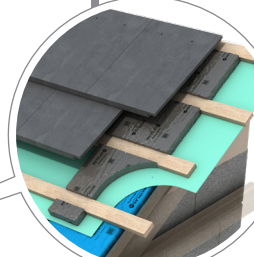
MP552 Party Wall Cavity Barrier

To be installed by the bricklayer.
Used as an alternative to MP557, but without DPC.
Tested to BS EN1366-4:2021 for a minimum of 60 minutes fire integrity (E) and insulation (I) Wall Cavity Barrier.



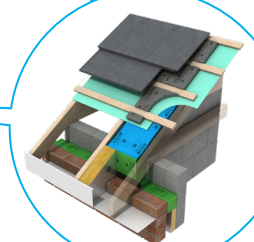
Tile Batten Barrier

To be installed by the timber frame installer or roofing contractor.
Used in conjunction with the Party Wall Head Cap to achieve 60 minutes fire integrity and 60 minutes insulation, assessed to BS 476-20:1987 & BS 476-22:1987



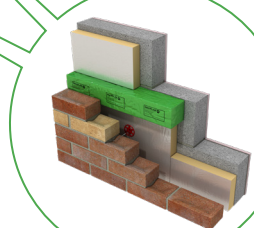
Party Wall Head Cap System

To be installed by the house builder or roofing contractor.
Used in conjunction with the Tile Batten Barrier to achieve 60 minutes fire integrity and 60 minutes insulation, assessed to BS 476-20:1987 & BS 476-22:1987



MP552 Cavity Barrier

To be installed by the bricklayer.
Tested at both mid-cavity and flush to apertures, as per the requirement of BS EN1366-4:2021 for up to 60 minutes fire integrity (E) and insulation (I).



Thermafire A2 Soffit

To be installed by the bricklayer or Roofing contractor.
Achieves Reaction to Fire A2-s1,d0 according to BS EN 13501-1.

